



Rabbit anti 14-3-3 zeta Polyclonal Antibody

Alternative Name(s): tyrosine 3-monooxygenase/tryptophan 5-monooxygenase activation protein, zeta polypeptide

Order Information

- **Description:** 14-3-3 zeta
- **Catalogue:** 500-12604
- **Lot:** See label
- **Size:** 100ug/200ul
- **Host:** Rabbit
- **Clone:** nan
- **Application:** IHC-P, WB
- **Reactivity:** Hu, Ms, Rt

ANTIGEN PREPARATION

A synthetic peptide corresponding to the internal sequence (134-149aa) of human 14-3-3 zeta.

BACKGROUND

The 14-3-3 proteins are a family of small, widely expressed, highly conserved cytosolic proteins. 14-3-3 proteins bind to and influence the activities of a diverse group of molecules involved in signal transduction, cell cycle regulation and apoptosis, including Raf, PKC, Bad, Cbl, and c-Bcr. Interactions between 14-3-3 and target proteins are strongly influenced by the phosphorylation state of 14-3-3 and the target protein. 14.3.3 zeta protein is a ubiquitous and abundant in brain. 14.3.3 zeta binds primarily to Raf noncatalytic sequences without inhibiting the Ras-Raf association or Raf-catalyzed MEK phosphorylation, thus it might act as a sweeper of misfolded protein by facilitating the formation of aggregates (inclusion bodies). Hence, 14-3-3 zeta may be considered as an auxiliary therapeutic tool in the protein aggregation disorders.

PURIFICATION

The Rabbit IgG is purified by Epitope Affinity Purification

FORMULATION

This affinity purified antibody is supplied in sterile Phosphatebuffered saline (pH7.2) containing antibody stabilizer

SPECIFICITY

This antibody recognizes ~30 kDa of human 14.3.3 zeta protein. This antibody reacts with human, mouse and rat. The other species are not tested.

STORAGE

The antibodies are stable for 24 months from date of receipt when stored at -20oC to -70oC. The antibodies can be stored at 2oC-8oC for three month without detectable loss of activity. Avoid repeated freezing-thawing cycles.

APPLICATIONS/SUGGESTED WORKING DILUTIONS*

- Western Blot: 0.1-1 µg/ml
- ELISA: 0.01-0.1 µg/ml
- Immunoprecipitation: 2-5 µg/ml
- IHC: 2-10 µg/ml
- Flow cytometry: Not tested
- Molecular Weight: 30.0
- Positive Control: Kidney Tissue
- Cellular Location: Cell Membrane

*Optimal dilutions should be determined by researchers for the specific applications.

FOR RESEARCH USE ONLY.

AbboMax, Inc 2528 Qume Drive, Suite 8, San Jose, California 95131, USA
1 408-573-1898 (Tel). 1 408-573-1858 (Fax). www.abbomax.com info@abbomax.com



FOR RESEARCH USE ONLY.

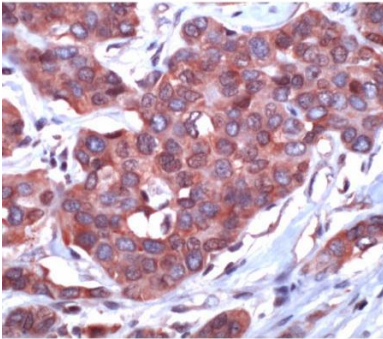
AbboMax, Inc 2528 Qume Drive, Suite 8, San Jose, California 95131, USA
1 408-573-1898 (Tel). 1 408-573-1858 (Fax). www.abbomax.com info@abbomax.com

DATA ATTACHMENTS



WB: 3T3 stained by
Rbx14.3.3 zeta @ 1:200

Western Blot: The whole lysate derived from 3T3 (20 ug/lane) immunoblotted by Rabbit anti – 14.3.3-zeta (Cat# 500-12604) at 1:200. Observed a major immunoreactive band at molecular weight ~30kDa.



IHC: Human Breast Cancer stained with
Rbx14.3.3 zeta (Cat# 500-12604) @ 1:50

Immunohistochemistry: Human Breast carcinoma (FFPE) stained with Rabbit anti-14.3.3-zeta (Cat#500-12604) at 1:50 for 10 min @ RT. Staining of formalin-fixed tissue requires boiling tissue sections in 10 mM Citrate Buffer, pH 6.0 for 10 min followed by cooling at RT for 20 min.

REFERENCES

FOR RESEARCH USE ONLY.